

RAPIDMESH™

MAKE-IT

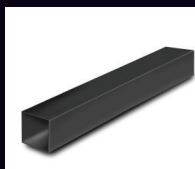
THE CLEVER WAY TO MAKE IT

Now there is a smarter way to make a variety of useful items for your home, studio, garage, office or anywhere.

Ideal for:

- Entertainment equipment
- Storage shelves
- Toy boxes
- Book shelves
- Coffee tables

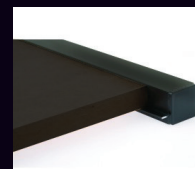
THERE ARE 3
SIMPLE PARTS
TO THE MAKE-IT
SYSTEM



MAKE-IT BLACK ANODISED ALUMINIUM SQUARE TUBE



MAKE-IT CLEAR ANODISED ALUMINIUM SQUARE TUBE



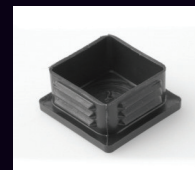
MAKE-IT BLACK ANODISED ALUMINIUM LIPPED TUBE



MAKE-IT CLEAR ANODISED ALUMINIUM LIPPED TUBE



MAKE-IT CORNER JOINERS



MAKE-IT END CAPS

Rapid Hardware Group Pty Ltd
222-224 Hammond Road,
Dandenong South, VIC 3175

www.rapidmesh.com.au

Available at
BUNNINGS
warehouse

WHAT YOU'LL NEED TO CREATE A SHOE RACK

Shoe Rack Dimensions

500mm high x 500mm wide x 275mm deep.

Plastic Connectors

4 x 3 way corner connectors.

4 x 4 way corner connectors.

4 x End caps (for the feet to be non scratch).

Shoe Shelf

4 x 450mm lengths lipped black tube.

Uprights & Cross Members

12 x 225mm lengths black tube.

You can make your shoe rack wider by simply selecting longer lengths for the shoe shelf tube. To add shelves, simply increase the number of 4 way corner connectors (4), shoe shelf (2), uprights & cross members (6) per shelf.



HANDY TIP

1. Use a black permanent marker on any cut ends to hide the silver edges.
2. Using the lipped tube facing upwards creates a gap between the shoe and the tube to help air dry any moisture on the soles.

WHAT YOU'LL NEED TO CREATE A STORAGE SHELF

Storage Shelf Dimensions

1250mm high x 1250mm wide x 275mm deep.

Plastic Connectors

4 x 3 way corner connectors.

4 x 4 way corner connectors.

4 x End caps (for the feet to be non scratch).

Shelf

4 x 1200mm Lipped Silver Tube.

Uprights & Cross Members

4 x 225mm Lipped Silver Tube.

8 x 600mm Square Silver Tube.

Shelves

2 x 1200mm x 225mm x 16mm laminated particle board (sold separately).

You can make your Shelf unit shorter, wider, taller, lower by simply selecting different lengths for the shelf & upright tube. To add shelves, simply increase the number of 4 way corner connectors (4), shelf (2), uprights (4) & cross members (2) per shelf.



HANDY TIP

1. Select your shelf material first, then work out the depth and width of your shelf unit.
2. Ideal shelf thickness is up to 16mm timber or 6mm glass.



07/2021